



Kenton C. Ward, CFM
Surveyor of Hamilton County
Phone (317) 776-8495
Fax (317) 776-9628

Suite 188
One Hamilton County Square
Noblesville, Indiana 46060-2230

May 26, 2011

TO: Hamilton County Drainage Board

Re: Long Branch Drain, J.W. Brendle Drain Arm

Upon Review of the drainage sheds I believe that the J.W. Brendle Drain #77 should be combined with the Long Branch Drain #331. I recommend this action as the Long Branch Drain is the downstream portion of the J.W. Brendle Drain. This will combine the two drains into one larger drainage area, which could not be done until the gap was closed between the two drains with the development of Abney Glen. These two drains are the same main stream and need to be combined to provide the most cost effective maintenance possible.

The Long Branch Drain in Clay Township was placed on a maintenance program when Long Branch Estates was developed. Surveyor's report for the Long Branch Drain is dated December 20, 2001, and approved by the Board at a hearing on January 28, 2002 (Hamilton County Drainage Board Minutes Book 6, Pages 252 to 253). At present the Long Branch Drain maintenance assessments affects 256.85 acres and 349 lots. The current rate of assessment for the Long Branch Drain is \$10.00 per acre for common area, \$65.00 minimum, \$65.00 per platted lot, and commercial is \$10.00 per acre, with a \$75.00 minimum. The roadways are assessed at \$10.00 per acre. These rates collect \$27,122.90 annually and the current balance in the maintenance fund is \$122,332.73. There are no outstanding work orders for the drain at this time.

The J.W. Brendle Drain in Clay Township was placed on a maintenance program on December 18, 1972. The Surveyor's report for the J.W. Brendle Drain was present to the Board on August 21, 1972 (Drainage Board Minutes Book 1, Page 88), a hearing was held on November 20, 1972 (Drainage Board Minutes Book 1, Page 91), and the certificates of assessment were signed on December 18, 1972 ((Drainage Board Minutes Book 1, Page 92). At present the J.W. Brendle Drain maintenance assessment affects 1119.86 acres and 1308 lots. The rate of assessment for the drain was set at \$1.00 per acre with a \$15.00 minimum for agricultural tracks and non-platted residential tracts, \$5.00 per acre with a \$35.00 minimum for un-regulated subdivisions, \$10.00 per acre with a \$65.00 minimum for regulated subdivision, \$10.00 per acre with a \$75.00 minimum for commercial lots and \$10.00 per acre with a \$65.00 minimum for roads. These rates collect \$90,635.08 annually and the current balance in the maintenance fund is \$267,168.50. There are three (3) outstanding work orders for the drain at this time.

The rates for the Long Branch Drain should be set as follows:

1. Maintenance assessment for roads and streets be set at \$10.00 per acre.
2. Maintenance assessment for agricultural tracts be set at \$2.00 per acre with a \$15.00 minimum.
3. Maintenance assessment for non-platted residential tracts be set at \$2.00 per acre with a \$15.00 minimum.
4. Maintenance assessment for commercial, institutional and multi-family residential tracts be set at \$10.00 per acre with a \$75.00 minimum.
5. Maintenance assessment for platted lots in subdivisions whose drainage systems will not be part of the regulated drain (those systems maintained by the City of Carmel) shall be set at \$35.00 per lot/minimum. Common areas within non-regulated drain subdivisions shall be assessed at \$5.00 per acre with a \$35.00 minimum.
6. Maintenance assessment for platted lots within subdivisions whose drainage system will be part of the regulated drain shall be set at \$65.00 per lot/minimum. Common areas within the regulated drain subdivisions shall be set at \$10.00 per acre with a \$65.00 minimum.

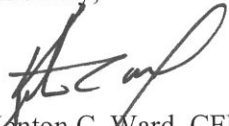
Except for the per acre rate for agricultural and non-platted residential tracts, the tracts in the J.W. Brendle watershed are now assessed to the same rate designations as above and should keep the same assessment rate as set out in paragraphs 1 and 4 through 6 above. The tracts currently in the Long Branch watershed should continue to be assessed as the land use fits into paragraphs 1, 4 and 6 above. This will result in no increased assessment for the current Long Branch parcel owners.

The total annual assessment for this Long Branch Drain will be \$118,081.46

Since these two drains are the same main drain, the current balance of the J.W. Brendle Drain shall be combined with the Long Branch Drain and these funds expended for needed maintenance in the entire Long Branch Drainage Area. No further maintenance collections for the J.W. Brendle Drain fund shall be made beginning in 2012 other than any delinquent assessments, penalties or interest which remain unpaid.

I recommend that a hearing be held for this matter on September 26, 2011.

Sincerely,



Kenton C. Ward, CFM
Hamilton County Surveyor

KCW/grh

FINDINGS AND ORDER

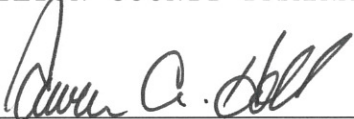
CONCERNING THE MAINTENANCE OF THE

Long Branch Drain, J. W. Brendel Arm

On this 26th day of September, 2011, the Hamilton County Drainage Board has held a hearing on the Maintenance Report and Schedule of Assessments of the **Long Branch Drain, J. W. Brendel Arm**.

Evidence has been heard. Objections were presented and considered. The Board then adopted the original/amended Schedule of Assessments. The Board now finds that the annual maintenance assessment will be less than the benefits to the landowners and issues this order declaring that this Maintenance Fund be established.

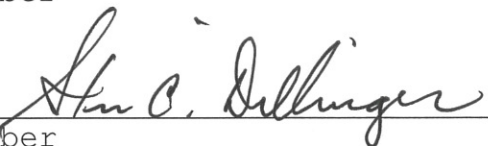
HAMILTON COUNTY DRAINAGE BOARD



President



Member



Member

Attest: 

Secretary

LONG BRANCH DRAIN, J. W. BRENDEL ARM

Property Owner	Parcel Number	Brendel Benefit	Brendel Assessment	Long Branch Benefit	Long Branch Assessment	% of Total
Serpas, Julio & Meredith	17-09-29-00-13-046.000	One Lot	\$65.00	One Lot	\$65.00	0.06%
Jensen, Craig J. & Sabrina P.	17-09-29-00-11-042.000	One Lot	\$65.00	One Lot	\$65.00	0.06%
Hileman, H. James	17-09-31-00-03-003.000	One Lot	\$65.00	One Lot	\$65.00	0.06%
Kampmeier, Connie & Mike	17-09-29-00-06-023.000	One Lot	\$65.00	One Lot	\$65.00	0.06%
TOTALS		4 Lot	\$260.00	4 Lots	\$260.00	0.24%

H. James Hileman
11828 Auburn Creek Xing
Zionsville, IN 46077
(W) 317-328-6700

September 17, 2011



Hamilton County Drainage Board
RE: J.W. Brendle Drain Arm
Attn: Kenton Ward
One Hamilton County Square, Ste 188
Noblesville, IN 46060

Dear Mr. Ward,

I am not in favor to combining the J.W. Brendle Drain and Long Branch Estates Drain maintenance funds.

The Long Branch Estates Drain (LBED) covers only 256 acres and 349 lots with a maintenance reserve fund of \$122,332. The much older, and in need of repair, J.W. Brendle Drain (JWBD) covers a much larger 1120 Acres and 1308 lots and has a reserve fund of only \$267,168.

The LBED maintenance fund contains \$122,332 representing \$350.52/lot or \$477.82/acre. The JWBD maintenance fund has only \$267,168 for 1,308 lots representing only \$204.26 per lot or \$238.54/acre. Additionally, the JWBD has 3 outstanding work orders and LBED has none.

Combining the JWBD and LBED funds would effectively transfer a significant proportion of the maintenance reserve that was paid for by Long Branch Estates residents to the JWBD fund. The "unknown" cost of the 3 outstanding work orders for JWBD could completely consume the LBED maintenance fund leaving residents at Long Branch Estates at financial risk for current or future maintenance costs of either drain.

Sincerely,


H. James Hileman

17-09-31-00-03-003.000

Long Branch Drain, J.W. Brendle Arm

65.00 Annually
J.W. Brendle

OFFICE OF
HAMILTON COUNTY DRAINAGE BOARD

Notice of Hearing to Establish Annual Assessments for the Periodic Maintenance of the
Long Branch Drain, J.W. Brendle Drain Arm.

Hileman, H James
11828 Auburn Creek Xing
Zionsville, IN 46077

Under the Indiana Drainage Code, all land which drains directly, or indirectly, may be assessed for either maintenance cost or reconstruction cost within the drain. In making the calculation for each parcel, the Drainage Board must calculate the percentage of the cost attributable to each parcel of land benefitted. From time to time the assessments may be increased or changed. The chart below contains your proposed assessment and your percentage of the total annual maintenance contribution to the costs attributable to providing drainage to your land.

The Drainage Board has received a maintenance report and schedule of assessments which affects your land. You are hereby notified that the maintenance report of the County Surveyor and the schedule of assessments made by the Drainage Board have been filed and are available for public inspection in the office of the County Surveyor.

The Surveyor has estimated that the annual cost of periodically maintaining the entire drain is \$118,081.46. The schedule of assessments shows you are the owner of tracts within the drainage shed. The following is your pro rata share for each tract and the proposed annual assessment for those tracts: This assessment is not a charge for services associated with regulating the quality of storm water within your city or town.

Parcel: 17-09-31-00-03-003.000 Rate:Regulated Subd					
	Current	Current	Proposed	Proposed	
	Acres	Maint.	Acres	Maint.	% of
	Benefited	Assmt.	Benefited	Assmt.	Asmnt.
S31 T18 R3 Long Branch Estates 3rd Lot 113	One Lot	\$65.00	One Lot	\$65.00	0.06%
If the J.W. Brendle is combined with the Long Branch Drain, future assessments will be made to Long Branch instead of J.W. Brendle.					

A public hearing will be held by the Drainage Board in Commissioner's Court at **9:05 A.M. on September 26, 2011** on the Surveyor's maintenance report and the proposed schedule of assessments. The law requires that any objection must be written and filed not less than five (5) days before the above hearing on the ground that benefits assessed are excessive. Written evidence in support of objections may also be filed. The failure of any owner to file an objection constitutes a waiver of his right to thereafter object on such ground to any final action of the Board. On or before the hearing date the Surveyor or any owner of lands named in the schedule of assessments may cause written evidence to be filed in support of or in rebuttal to any objection filed.

HAMILTON COUNTY DRAINAGE BOARD
One Hamilton County Square, Ste. 188
Noblesville, IN 46060

For a copy of the Surveyor's Report to the Drainage Board and a copy of the map, if applicable, please go to www.hamiltoncounty.in.gov/drainageboardnotices.

Property Reports: Special Assessments

1. report type

Reset

2. property search

new search

3. view reports

general parcel info.

spring tax statement

tax payments

property card

fall tax statement

Special Assessments

This program allows you to view and print certain public records. Each section reflects information as of a specific date; so the information provided in different sections or reports may not match. All information has been derived from public records that are constantly undergoing change and is not warranted for content or accuracy. It may not reflect the current information pertaining to the property of interest.

This accounting includes maintenance drain assessments, delinquent sewage liens, and weed liens for 2010 payable 2011 taxes as of March 21, 2011. It does include drainage reconstruction assessments, however, these amounts appear on a separate bill.

- * For newer information on Drainage Assessments, contact the County Surveyor's Office.
- * For newer information on Weed Liens and Delinquent Sewage Liens, contact the appropriate Utility.
- * For newer information on Barrett Liens, contact the County Auditor's Office.
- * For newer information on Payments, contact the County Treasurer's Office, or click the Tax Payments Button (above).

MAKE ALL CHECKS PAYABLE TO:

HAMILTON COUNTY TREASURER
33 N. NINTH ST
NOBLESVILLE IN 46060

*** The Total Due is included in the Tax Statement.

Special Assessments for Parcel: 17-09-31-00-03-003.000

State Formatted Parcel No:
29-09-31-003-003.000-018

Special Assessment Name	Spring Assessment	Delinquent Tax and Penalties	Fall Assessment	Total Due**
M331-Long Branch (5331)	\$32.50	\$0.00	\$32.50	\$65.00



Hamilton County

This is My Map

Printed: Sep 20, 2011



The information on this web site is provided and hosted by Hamilton County, Indiana. Continued use of this web site is conditional upon your explicit acceptance of the terms and conditions set forth in this disclaimer document. The data provided herein may be inaccurate and/or out of date. Any person or entity who relies on this data for any purpose whatsoever does so solely at their own risk. Neither Hamilton County Indiana nor its employees or officers warrant the accuracy, reliability, or timeliness of any of the data provided herein. This data is provided "as is" without warranty of any kind. Hamilton County may elect to discontinue this service without notice at any point in the future.

County of
Hamilton
Indiana
www.hamiltoncounty.in.gov

September 1, 2011

RE: Assessment for S29 T18 R3 Townhomes at Stanford Park 3rd Lot 249

To Whom It May Concern:

I recently received a letter regarding an assessment for Long Branch Drain, J.W. Bendle Arm. I am unfamiliar with this and want to know how the value of \$65.00 was determined for the property at 3534 Golden Gate Drive North. This seems excessive as this is a townhome which is one of seven in a building and one of 78 townhomes in a community.

I look forward to information regarding the assessment and explanation on how this amount is figured, as I am unsure why I have to pay and if I have to why it is so high for a townhome with very little property.

Sincerely,



Craig Jensen

Please respond by letter, phone or email to the information below:

Craig Jensen
1783 Hourglass Drive
Carmel Indiana 46032
317-714-7086
csjensen@me.com

17-09-29-00-11-042.000

65.00 Annually
J.W. Bendle





Kenton C. Ward, CFM
Surveyor of Hamilton County
Phone (317) 776-8495
Fax (317) 776-9628

Suite 188
One Hamilton County Square
Noblesville, Indiana 46060-2230

September 23, 2011

Craig Jensen
1783 Hourglass Drive
Carmel, IN 46032

Re: Long Branch Drain, J. W. Brendel Arm

I received your letter of objection regarding the above referenced hearing dated September 1, 2011. Please be aware that the \$65.00 assessment is the minimum rate for platted residential tracts. The proposed rate is the same rate that you are currently assessed.

Sincerely,

A handwritten signature in black ink, appearing to read "K. Ward", written over a horizontal line.

Kenton C. Ward, CFM
Hamilton County Surveyor

KCW/llm

OFFICE OF

HAMILTON COUNTY DRAINAGE BOARD

Notice of Hearing to Establish Annual Assessments for the Periodic Maintenance of the
Long Branch Drain, J.W. Brendle Drain Arm.

Jensen, Craig J & Sabrina P
1783 Hourglass Dr
Carmel, IN 46032

Under the Indiana Drainage Code, all land which drains directly, or indirectly, may be assessed for either maintenance cost or reconstruction cost within the drain. In making the calculation for each parcel, the Drainage Board must calculate the percentage of the cost attributable to each parcel of land benefitted. From time to time the assessments may be increased or changed. The chart below contains your proposed assessment and your percentage of the total annual maintenance contribution to the costs attributable to providing drainage to your land.

The Drainage Board has received a maintenance report and schedule of assessments which affects your land. You are hereby notified that the maintenance report of the County Surveyor and the schedule of assessments made by the Drainage Board have been filed and are available for public inspection in the office of the County Surveyor.

The Surveyor has estimated that the annual cost of periodically maintaining the entire drain is \$118,081.46. The schedule of assessments shows you are the owner of tracts within the drainage shed. The following is your pro rata share for each tract and the proposed annual assessment for those tracts: This assessment is not a charge for services associated with regulating the quality of storm water within your city or town.

Parcel: 17-09-29-00-11-042.000 Rate:Regulated Subd					
	Current	Current	Proposed	Proposed	
	Acres	Maint.	Acres	Maint.	% of
	Benefited	Assmt.	Benefited	Assmt.	Asmnt.
S29 T18 R3 Townhomes@Stanford Park 3rd Lot 249	n/a	n/a	One Lot	\$65.00	0.06%
If the J.W. Brendle is combined with the Long Branch Drain, future assessments will be made to Long Branch instead of J.W. Brendle.					

A public hearing will be held by the Drainage Board in Commissioner's Court at **9:05 A.M. on September 26, 2011** on the Surveyor's maintenance report and the proposed schedule of assessments. The law requires that any objection must be written and filed not less than five (5) days before the above hearing on the ground that benefits assessed are excessive. Written evidence in support of objections may also be filed. The failure of any owner to file an objection constitutes a waiver of his right to thereafter object on such ground to any final action of the Board. On or before the hearing date the Surveyor or any owner of lands named in the schedule of assessments may cause written evidence to be filed in support of or in rebuttal to any objection filed.

HAMILTON COUNTY DRAINAGE BOARD
One Hamilton County Square, Ste. 188
Noblesville, IN 46060

For a copy of the Surveyor's Report to the Drainage Board and a copy of the map, if applicable, please go to www.hamiltoncounty.in.gov/drainageboardnotices.

Property Reports: Special Assessments

1. report type

Reset

2. property search

new search

3. view reports

general parcel info.

spring tax statement

tax payments

property card

fall tax statement

Special Assessments

This program allows you to view and print certain public records. Each section reflects information as of a specific date; so the information provided in different sections or reports may not match. All information has been derived from public records that are constantly undergoing change and is not warranted for content or accuracy. It may not reflect the current information pertaining to the property of interest.

This accounting includes maintenance drain assessments, delinquent sewage liens, and weed liens for 2010 payable 2011 taxes as of March 21, 2011. It does include drainage reconstruction assessments, however, these amounts appear on a separate bill.

- * For newer information on Drainage Assessments, contact the County Surveyor's Office.
- * For newer information on Weed Liens and Delinquent Sewage Liens, contact the appropriate Utility.
- * For newer information on Barrett Liens, contact the County Auditor's Office.
- * For newer information on Payments, contact the County Treasurer's Office, or click the Tax Payments Button (above).

MAKE ALL CHECKS PAYABLE TO:
 HAMILTON COUNTY TREASURER
 33 N. NINTH ST
 NOBLESVILLE IN 46060

*** The Total Due is included in the Tax Statement.

Special Assessments for Parcel: 17-09-29-00-11-042.000

State Formatted Parcel No:
 29-09-29-011-042.000-018

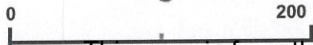
Special Assessment Name	Spring Assessment	Delinquent Tax and Penalties	Fall Assessment	Total Due**
M077-Brendle, J.W. (\$77)	\$32.50	\$0.00	\$32.50	\$65.00



Hamilton County

This is My Map

Printed: Sep 14, 2011



The information on this web site is provided and hosted by Hamilton County, Indiana. Continued use of this web site is conditional upon your explicit acceptance of the terms and conditions set forth in this disclaimer document. The data provided herein may be inaccurate and/or out of date. Any person or entity who relies on this data for any purpose whatsoever does so solely at their own risk. Neither Hamilton County Indiana nor its employees or officers warrant the accuracy, reliability, or timeliness of any of the data provided herein. This data is provided "as is" without warranty of any kind. Hamilton County may elect to discontinue this service without notice at any point in the future.



Monday, August 29, 2011

Julio Serpas
12833 Petronia Ct
Carmel, IN 46032
S29 T18 R3 Aberdeen Bend Lot 46



Hamilton County Drainage Board
One Hamilton County Square, Ste. 188
Noblesville, IN 46060

Drainage Board,

This letter is to certify my objection to the new fee for periodic maintenance of the **Long Branch Drain, J.W. Brendle Drain Arm.**

Has local government turn into an airline? It seems that Carmel for the last couple of years is doing just that when it comes to property taxes with the use of fees (special assessments):

1. In 2011, my property taxes went up in excess of 11.45% instead of just 1% mandated by Governor Mitch Daniels.
2. We already pay \$65 a year, **in addition to our property taxes**, for M077-Brendle, J.W. (577).
3. Now you want to increase our property taxes 0.06 percent by this new fee?

I am truly disappointed with the board and the city of Carmel. Mitch Daniels needs to look into our local government. You are getting around the 1% property tax rule with all these miscellaneous fees.

A handwritten signature in black ink that appears to read "Julio Serpas".

Julio Serpas

*65.00 Annually
M077-J.W. Brendle*

17-09-29-00-13-046.000



Kenton C. Ward, CFM
Surveyor of Hamilton County
Phone (317) 776-8495
Fax (317) 776-9628

Suite 188
One Hamilton County Square
Noblesville, Indiana 46060-2230

September 23, 2011

Julio Serpas
12833 Petronia Ct.
Carmel, IN 46032

Re: Long Branch Drain, J. W. Brendel Arm

I received your letter of objection regarding the above referenced hearing dated August 29, 2011. Please note that your current assessment of \$65.00 for the Brendel Drain will no longer be collected under this proposal. Instead, an annual assessment of \$65.00 will be charged to the Long Branch Drain. The increase will be zero.

Sincerely,

Kenton C. Ward, CFM
Hamilton County Surveyor

KCW/llm

OFFICE OF

HAMILTON COUNTY DRAINAGE BOARD

Notice of Hearing to Establish Annual Assessments for the Periodic Maintenance of the Long Branch Drain, J.W. Brendle Drain Arm.

Serpas, Julio & Meredith
12833 Petronia Ct
Carmel, IN 46032

Under the Indiana Drainage Code, all land which drains directly, or indirectly, may be assessed for either maintenance cost or reconstruction cost within the drain. In making the calculation for each parcel, the Drainage Board must calculate the percentage of the cost attributable to each parcel of land benefitted. From time to time the assessments may be increased or changed. The chart below contains your proposed assessment and your percentage of the total annual maintenance contribution to the costs attributable to providing drainage to your land.

The Drainage Board has received a maintenance report and schedule of assessments which affects your land. You are hereby notified that the maintenance report of the County Surveyor and the schedule of assessments made by the Drainage Board have been filed and are available for public inspection in the office of the County Surveyor.

The Surveyor has estimated that the annual cost of periodically maintaining the entire drain is \$118,081.46. The schedule of assessments shows you are the owner of tracts within the drainage shed. The following is your pro rata share for each tract and the proposed annual assessment for those tracts: This assessment is not a charge for services associated with regulating the quality of storm water within your city or town.

Table with 6 columns: Parcel ID, Current Acres, Current Maint. Assmt., Proposed Acres, Proposed Assmt., % of Assmt. Row 1: S29 T18 R3 Aberdeen Bend Lot 46, n/a, n/a, One Lot, \$65.00, 0.06%. Note: If the J.W. Brendle is combined with the Long Branch Drain, future assessments will be made to Long Branch instead of J.W. Brendle.

A public hearing will be held by the Drainage Board in Commissioner's Court at 9:05 A.M. on September 26, 2011 on the Surveyor's maintenance report and the proposed schedule of assessments. The law requires that any objection must be written and filed not less than five (5) days before the above hearing on the ground that benefits assessed are excessive. Written evidence in support of objections may also be filed. The failure of any owner to file an objection constitutes a waiver of his right to thereafter object on such ground to any final action of the Board. On or before the hearing date the Surveyor or any owner of lands named in the schedule of assessments may cause written evidence to be filed in support of or in rebuttal to any objection filed.

HAMILTON COUNTY DRAINAGE BOARD
One Hamilton County Square, Ste. 188
Noblesville, IN 46060

For a copy of the Surveyor's Report to the Drainage Board and a copy of the map, if applicable, please go to www.hamiltoncounty.in.gov/drainageboardnotices.

Property Reports: Special Assessments

1. report type

Reset

2. property search

new search

3. view reports

general parcel info.

spring tax statement

tax payments

property card

fall tax statement

Special Assessments

This program allows you to view and print certain public records. Each section reflects information as of a specific date; so the information provided in different sections or reports may not match. All information has been derived from public records that are constantly undergoing change and is not warranted for content or accuracy. It may not reflect the current information pertaining to the property of interest.

This accounting includes maintenance drain assessments, delinquent sewage liens, and weed liens for 2010 payable 2011 taxes as of March 21, 2011. It does include drainage reconstruction assessments, however, these amounts appear on a separate bill.

- * For newer information on Drainage Assessments, contact the County Surveyor's Office.
- * For newer information on Weed Liens and Delinquent Sewage Liens, contact the appropriate Utility.
- * For newer information on Barrett Liens, contact the County Auditor's Office.
- * For newer information on Payments, contact the County Treasurer's Office, or click the Tax Payments Button (above).

MAKE ALL CHECKS PAYABLE TO:
 HAMILTON COUNTY TREASURER
 33 N. NINTH ST
 NOBLESVILLE IN 46060

** The Total Due is included in the Tax Statement.

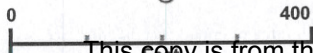
Special Assessments for Parcel: 17-09-29-00-13-046.000				State Formatted Parcel No: 29-09-29-013-046.000-018	
Special Assessment Name	Spring Assessment	Delinquent Tax and Penalties	Fall Assessment	Total Due**	
M077-Brendle, J.W. (577)	\$32.50	\$0.00	\$32.50	\$65.00	



Hamilton County

This is My Map

Printed: Sep 14, 2011



The information on this web site is provided and hosted by Hamilton County, Indiana. Continued use of this web site is conditional upon your explicit acceptance of the terms and conditions set forth in this disclaimer document. The data provided herein may be inaccurate and/or out of date. Any person or entity who relies on this data for any purpose whatsoever does so solely at their own risk. Neither Hamilton County Indiana nor its employees or officers warrant the accuracy, reliability, or timeliness of any of the data provided herein. Hamilton County, Indiana may, without notice, discontinue this service without any liability at any point in the future.

County of
Hamilton
Indiana
www.hamiltoncounty.in.gov



September 20, 2011

To: Hamilton County Drainage Board
One Hamilton County Square Ste 188
Noblesville, IN 46060

To Whom It May Concern:

I am receipt of a letter from the Hamilton County Drainage Board regarding an proposed assessment that may be increased or changed for Parcel: 17-09-29-00-06-023.000, Located at S29 T18 R3 Lakes @Hayden Run 2nd Lot 89.

I am writing this letter in objection to any proposed scheduled assessment increase or change. These assessments are excessive and I object to any changes in the assessment.

Please take this letter as written evidence to be filed in rebuttal and objection to any proposed increase.

Thank you,

Connie Kampmeier
Connie Kampmeier PhD RN MS BSN CCM
13553 Lorenzo Blvd
Carmel, IN 46074

17-09-29-00-06-023.000

Long Branch Drain, J.W. Brendel Arm

*65.00 Annually
J.W. Brendel*



Kenton C. Ward, CFM
Surveyor of Hamilton County
Phone (317) 776-8495
Fax (317) 776-9628

Suite 188
One Hamilton County Square
Noblesville, Indiana 46060-2230

September 23, 2011

Connie Kampmeier
13553 Lorenzo Blvd.
Carmel, IN 46074

Re: Long Branch Drain, J. W. Brendel Arm

I received your letter of objection regarding the above referenced hearing dated August 29, 2011. Please note that your current assessment of \$65.00 for the Brendel Drain will no longer be collected under this proposal. Instead, an annual assessment of \$65.00 will be charged to the Long Branch Drain. The increase will be zero.

Sincerely,

A handwritten signature in black ink, appearing to read "K. Ward", written over a horizontal line.

Kenton C. Ward, CFM
Hamilton County Surveyor

KCW/llm

OFFICE OF
HAMILTON COUNTY DRAINAGE BOARD

Notice of Hearing to Establish Annual Assessments for the Periodic Maintenance of the
Long Branch Drain, J.W. Brendle Drain Arm.

Kampmeier, Connie & Mike
13553 Lorenzo Blvd
Carmel, IN 46074

Under the Indiana Drainage Code, all land which drains directly, or indirectly, may be assessed for either maintenance cost or reconstruction cost within the drain. In making the calculation for each parcel, the Drainage Board must calculate the percentage of the cost attributable to each parcel of land benefitted. From time to time the assessments may be increased or changed. The chart below contains your proposed assessment and your percentage of the total annual maintenance contribution to the costs attributable to providing drainage to your land.

The Drainage Board has received a maintenance report and schedule of assessments which affects your land. You are hereby notified that the maintenance report of the County Surveyor and the schedule of assessments made by the Drainage Board have been filed and are available for public inspection in the office of the County Surveyor.

The Surveyor has estimated that the annual cost of periodically maintaining the entire drain is \$118,081.46. The schedule of assessments shows you are the owner of tracts within the drainage shed. The following is your pro rata share for each tract and the proposed annual assessment for those tracts: This assessment is not a charge for services associated with regulating the quality of storm water within your city or town.

Parcel: 17-09-29-00-06-023.000 Rate:Regulated Subd					
	Current	Current	Proposed	Proposed	
	Acres	Maint.	Acres	Maint.	% of
	Benefited	Assmt.	Benefited	Assmt.	Assmnt.
S29 T18 R3 Lakes@Hayden Run 2nd Lot 89	n/a	n/a	One Lot	\$65.00	0.06%
If the J.W. Brendle is combined with the Long Branch Drain, future assessments will be made to Long Branch instead of J.W. Brendle.					

A public hearing will be held by the Drainage Board in Commissioner's Court at **9:05 A.M. on September 26, 2011** on the Surveyor's maintenance report and the proposed schedule of assessments. The law requires that any objection must be written and filed not less than five (5) days before the above hearing on the ground that benefits assessed are excessive. Written evidence in support of objections may also be filed. The failure of any owner to file an objection constitutes a waiver of his right to thereafter object on such ground to any final action of the Board. On or before the hearing date the Surveyor or any owner of lands named in the schedule of assessments may cause written evidence to be filed in support of or in rebuttal to any objection filed.

HAMILTON COUNTY DRAINAGE BOARD
One Hamilton County Square, Ste. 188
Noblesville, IN 46060

For a copy of the Surveyor's Report to the Drainage Board and a copy of the map, if applicable, please go to www.hamiltoncounty.in.gov/drainageboardnotices.

Property Reports: Special Assessments

1. report type

Reset

2. property search

new search

3. view reports

general parcel info.

spring tax statement

tax payments

property card

fall tax statement

Special Assessments

This program allows you to view and print certain public records. Each section reflects information as of a specific date; so the information provided in different sections or reports may not match. All information has been derived from public records that are constantly undergoing change and is not warranted for content or accuracy. It may not reflect the current information pertaining to the property of interest.

This accounting includes maintenance drain assessments, delinquent sewage liens, and weed liens for 2010 payable 2011 taxes as of March 21, 2011. It does include drainage reconstruction assessments, however, these amounts appear on a separate bill.

- * For newer information on Drainage Assessments, contact the County Surveyor's Office.
- * For newer information on Weed Liens and Delinquent Sewage Liens, contact the appropriate Utility.
- * For newer information on Barrett Liens, contact the County Auditor's Office.
- * For newer information on Payments, contact the County Treasurer's Office, or click the Tax Payments Button (above).

MAKE ALL CHECKS PAYABLE TO:

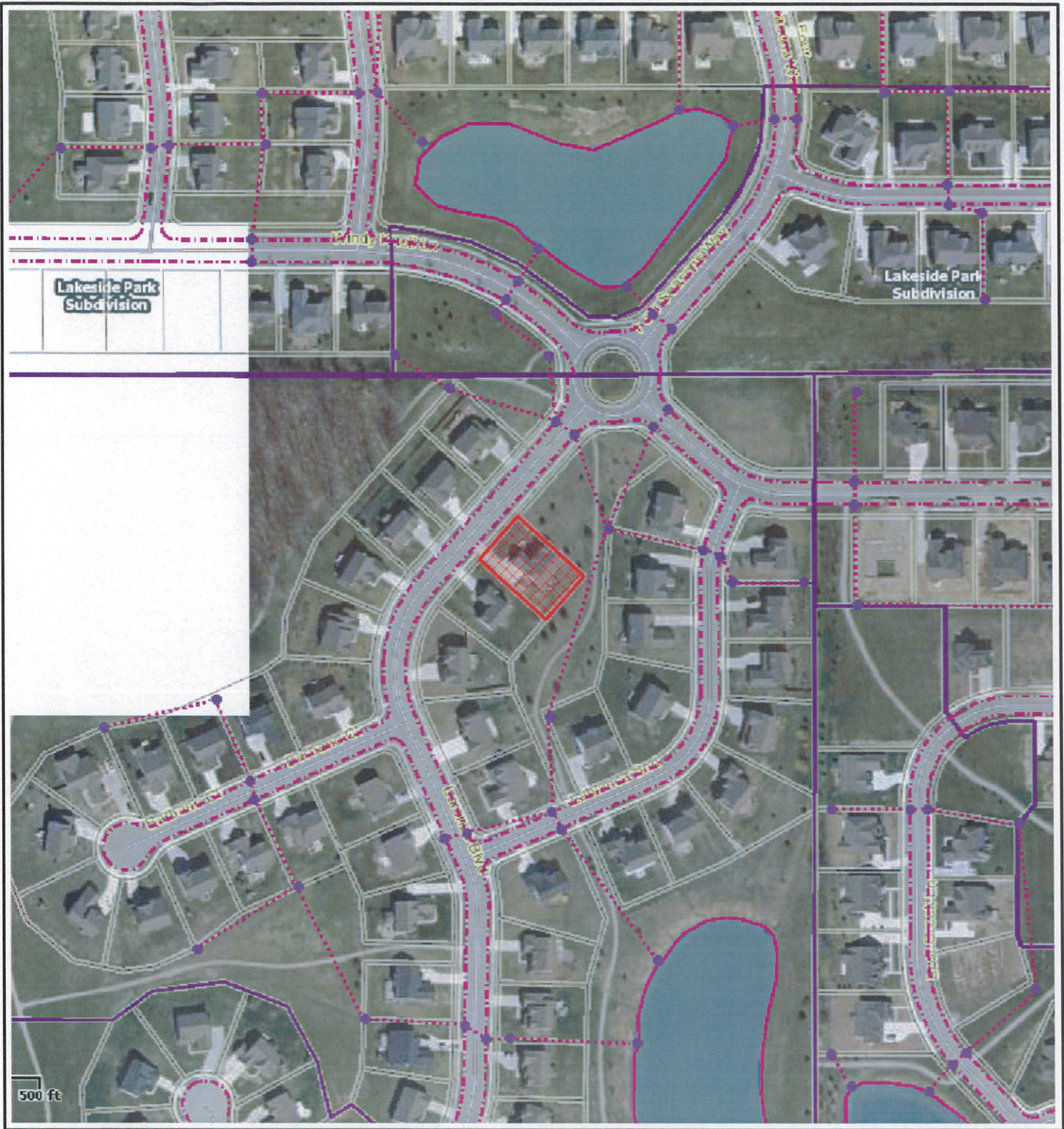
HAMILTON COUNTY TREASURER
33 N. NINTH ST
NOBLESVILLE IN 46060

*** The Total Due is included in the Tax Statement.

Special Assessments for Parcel: 17-09-29-00-06-023.000

State Formatted Parcel No:
29-09-29-006-023.000-018

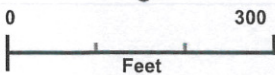
Special Assessment Name	Spring Assessment	Delinquent Tax and Penalties	Fall Assessment	Total Due**
M077-Brendle, J.W. (\$77)	\$32.50	\$0.00	\$32.50	\$65.00



Hamilton County

This is My Map

Printed: Sep 21, 2011



The information on this web site is provided and hosted by Hamilton County, Indiana. Continued use of this web site is conditional upon your explicit acceptance of the terms and conditions set forth in this disclaimer document. The data provided herein may be inaccurate and/or out of date. Any person or entity who relies on this data for any purpose whatsoever does so solely at their own risk. Neither Hamilton County Indiana nor its employees or officers warrant the accuracy, reliability, or timeliness of any of the data provided herein. This data is provided "as is" without warranty of any kind. Hamilton County may elect to discontinue this service without notice at any point in the future.

County of
Hamilton
Indiana
www.hamiltoncounty.in.gov

OFFICE OF
HAMILTON COUNTY DRAINAGE BOARD

Notice of Hearing to Establish Annual Assessments for the Periodic Maintenance of the
Long Branch Drain, J.W. Brendle Drain Arm.

Spurgeon, Ted L Jr & Tanya L
 11764 Sweeping Ridge Dr
 Zionsville, IN 46077

Under the Indiana Drainage Code, all land which drains directly, or indirectly, may be assessed for either maintenance cost or reconstruction cost within the drain. In making the calculation for each parcel, the Drainage Board must calculate the percentage of the cost attributable to each parcel of land benefitted. From time to time the assessments may be increased or changed. The chart below contains your proposed assessment and your percentage of the total annual maintenance contribution to the costs attributable to providing drainage to your land.

The Drainage Board has received a maintenance report and schedule of assessments which affects your land. You are hereby notified that the maintenance report of the County Surveyor and the schedule of assessments made by the Drainage Board have been filed and are available for public inspection in the office of the County Surveyor.

The Surveyor has estimated that the annual cost of periodically maintaining the entire drain is \$118,081.46. The schedule of assessments shows you are the owner of tracts within the drainage shed. The following is your pro rata share for each tract and the proposed annual assessment for those tracts: This assessment is not a charge for services associated with regulating the quality of storm water within your city or town.

Parcel: 17-09-31-00-01-017.000 Rate:Regulated Subd					
	Current	Current	Proposed	Proposed	
	Acres	Maint.	Acres	Maint.	% of
S31 T18 R3 Long Branch Estates 1st Lot 17	Benefited	Assmt.	Benefited	Assmt.	Asmnt.
	One Lot	\$65.00	One Lot	\$65.00	0.06%
If the J.W. Brendle is combined with the Long Branch Drain, future assessments will be made to Long Branch instead of J.W. Brendle.					

A public hearing will be held by the Drainage Board in Commissioner's Court at **9:05 A.M. on September 26, 2011** on the Surveyor's maintenance report and the proposed schedule of assessments. The law requires that any objection must be written and filed not less than five (5) days before the above hearing on the ground that benefits assessed are excessive. Written evidence in support of objections may also be filed. The failure of any owner to file an objection constitutes a waiver of his right to thereafter object on such ground to any final action of the Board. On or before the hearing date the Surveyor or any owner of lands named in the schedule of assessments may cause written evidence to be filed in support of or in rebuttal to any objection filed.

HAMILTON COUNTY DRAINAGE BOARD
 One Hamilton County Square, Ste. 188
 Noblesville, IN 46060

For a copy of the Surveyor's Report to the Drainage Board and a copy of the map, if applicable, please go to www.hamiltoncounty.in.gov/drainageboardnotices.

RETURNED

OFFICE OF

HAMILTON COUNTY DRAINAGE BOARD

Notice of Hearing to Establish Annual Assessments for the Periodic Maintenance of the Long Branch Drain, J.W. Brendle Drain Arm.

Fang, Stephanie L Powell
3446 Wexley Ct
Carmel, IN 46032

Under the Indiana Drainage Code, all land which drains directly, or indirectly, may be assessed for either maintenance cost or reconstruction cost within the drain. In making the calculation for each parcel, the Drainage Board must calculate the percentage of the cost attributable to each parcel of land benefitted. From time to time the assessments may be increased or changed. The chart below contains your proposed assessment and your percentage of the total annual maintenance contribution to the costs attributable to providing drainage to your land.

The Drainage Board has received a maintenance report and schedule of assessments which affects your land. You are hereby notified that the maintenance report of the County Surveyor and the schedule of assessments made by the Drainage Board have been filed and are available for public inspection in the office of the County Surveyor.

The Surveyor has estimated that the annual cost of periodically maintaining the entire drain is \$118,081.46. The schedule of assessments shows you are the owner of tracts within the drainage shed. The following is your pro rata share for each tract and the proposed annual assessment for those tracts: This assessment is not a charge for services associated with regulating the quality of storm water within your city or town.

Table with 6 columns: Parcel ID, Current Acres, Current Maint. Assmt., Proposed Acres, Proposed Maint. Assmt., % of Assmt. Row 1: S29 T18 R3 Wexley Chase Lot 34, n/a, n/a, One Lot, \$65.00, 0.06%. Row 2: Note about J.W. Brendle combined with Long Branch Drain.

A public hearing will be held by the Drainage Board in Commissioner's Court at 9:05 A.M. on September 26, 2011 on the Surveyor's maintenance report and the proposed schedule of assessments. The law requires that any objection must be written and filed not less than five (5) days before the above hearing on the ground that benefits assessed are excessive. Written evidence in support of objections may also be filed. The failure of any owner to file an objection constitutes a waiver of his right to thereafter object on such ground to any final action of the Board. On or before the hearing date the Surveyor or any owner of lands named in the schedule of assessments may cause written evidence to be filed in support of or in rebuttal to any objection filed.

HAMILTON COUNTY DRAINAGE BOARD
One Hamilton County Square, Ste. 188
Noblesville, IN 46060

For a copy of the Surveyor's Report to the Drainage Board and a copy of the map, if applicable, please go to www.hamiltoncounty.in.gov/drainageboardnotices.

RETURNED

OFFICE OF
HAMILTON COUNTY DRAINAGE BOARD

Notice of Hearing to Establish Annual Assessments for the Periodic Maintenance of the
Long Branch Drain, J.W. Brendle Drain Arm.

Miller, Edward W
2426 Laurel Lakes Blvd
Carmel, IN 46032

Under the Indiana Drainage Code, all land which drains directly, or indirectly, may be assessed for either maintenance cost or reconstruction cost within the drain. In making the calculation for each parcel, the Drainage Board must calculate the percentage of the cost attributable to each parcel of land benefitted. From time to time the assessments may be increased or changed. The chart below contains your proposed assessment and your percentage of the total annual maintenance contribution to the costs attributable to providing drainage to your land.

The Drainage Board has received a maintenance report and schedule of assessments which affects your land. You are hereby notified that the maintenance report of the County Surveyor and the schedule of assessments made by the Drainage Board have been filed and are available for public inspection in the office of the County Surveyor.

The Surveyor has estimated that the annual cost of periodically maintaining the entire drain is \$118,081.46. The schedule of assessments shows you are the owner of tracts within the drainage shed. The following is your pro rata share for each tract and the proposed annual assessment for those tracts: This assessment is not a charge for services associated with regulating the quality of storm water within your city or town.

Parcel: 17-09-32-00-03-022.000 Rate:Un-Regulated Subd					
	Current	Current	Proposed	Proposed	
	Acres	Maint.	Acres	Maint.	% of
	Benefited	Assmt.	Benefited	Assmt.	Asmnt.
S32 T18 R3 Laurel Lakes 2nd Lot 67	n/a	n/a	One Lot	\$35.00	0.03%
If the J.W. Brendle is combined with the Long Branch Drain, future assessments will be made to Long Branch instead of J.W. Brendle.					

A public hearing will be held by the Drainage Board in Commissioner's Court at **9:05 A.M. on September 26, 2011** on the Surveyor's maintenance report and the proposed schedule of assessments. The law requires that any objection must be written and filed not less than five (5) days before the above hearing on the ground that benefits assessed are excessive. Written evidence in support of objections may also be filed. The failure of any owner to file an objection constitutes a waiver of his right to thereafter object on such ground to any final action of the Board. On or before the hearing date the Surveyor or any owner of lands named in the schedule of assessments may cause written evidence to be filed in support of or in rebuttal to any objection filed.

HAMILTON COUNTY DRAINAGE BOARD
One Hamilton County Square, Ste. 188
Noblesville, IN 46060

For a copy of the Surveyor's Report to the Drainage Board and a copy of the map, if applicable, please go to www.hamiltoncounty.in.gov/drainageboardnotices.

OFFICE OF
HAMILTON COUNTY DRAINAGE BOARD

Notice of Hearing to Establish Annual Assessments for the Periodic Maintenance of the
Long Branch Drain, J.W. Brendle Drain Arm.

Williamson, Toni S
 13400 Golden Gate Dr W
 Carmel, IN 46074

Under the Indiana Drainage Code, all land which drains directly, or indirectly, may be assessed for either maintenance cost or reconstruction cost within the drain. In making the calculation for each parcel, the Drainage Board must calculate the percentage of the cost attributable to each parcel of land benefitted. From time to time the assessments may be increased or changed. The chart below contains your proposed assessment and your percentage of the total annual maintenance contribution to the costs attributable to providing drainage to your land.

The Drainage Board has received a maintenance report and schedule of assessments which affects your land. You are hereby notified that the maintenance report of the County Surveyor and the schedule of assessments made by the Drainage Board have been filed and are available for public inspection in the office of the County Surveyor.

The Surveyor has estimated that the annual cost of periodically maintaining the entire drain is \$118,081.46. The schedule of assessments shows you are the owner of tracts within the drainage shed. The following is your pro rata share for each tract and the proposed annual assessment for those tracts: This assessment is not a charge for services associated with regulating the quality of storm water within your city or town.

Parcel: 17-09-29-00-11-005.000 Rate:Regulated Subd					
	Current	Current	Proposed	Proposed	
	Acres	Maint.	Acres	Maint.	% of
	Benefited	Assmt.	Benefited	Assmt.	Asmnt.
S29 T18 R3 Townhomes@Stanford Park 3rd Lot 271	n/a	n/a	One Lot	\$65.00	0.06%
If the J.W. Brendle is combined with the Long Branch Drain, future assessments will be made to Long Branch instead of J.W. Brendle.					

A public hearing will be held by the Drainage Board in Commissioner's Court at **9:05 A.M. on September 26, 2011** on the Surveyor's maintenance report and the proposed schedule of assessments. The law requires that any objection must be written and filed not less than five (5) days before the above hearing on the ground that benefits assessed are excessive. Written evidence in support of objections may also be filed. The failure of any owner to file an objection constitutes a waiver of his right to thereafter object on such ground to any final action of the Board. On or before the hearing date the Surveyor or any owner of lands named in the schedule of assessments may cause written evidence to be filed in support of or in rebuttal to any objection filed.

HAMILTON COUNTY DRAINAGE BOARD
 One Hamilton County Square, Ste. 188
 Noblesville, IN 46060

For a copy of the Surveyor's Report to the Drainage Board and a copy of the map, if applicable, please go to www.hamiltoncounty.in.gov/drainageboardnotices.

RETURNED

OFFICE OF

HAMILTON COUNTY DRAINAGE BOARD

Notice of Hearing to Establish Annual Assessments for the Periodic Maintenance of the Long Branch Drain, J.W. Brendle Drain Arm.

Gunawan, Boy Stephanus
3521 Cardinal Way
Carmel, IN 46074

Under the Indiana Drainage Code, all land which drains directly, or indirectly, may be assessed for either maintenance cost or reconstruction cost within the drain. In making the calculation for each parcel, the Drainage Board must calculate the percentage of the cost attributable to each parcel of land benefitted. From time to time the assessments may be increased or changed. The chart below contains your proposed assessment and your percentage of the total annual maintenance contribution to the costs attributable to providing drainage to your land.

The Drainage Board has received a maintenance report and schedule of assessments which affects your land. You are hereby notified that the maintenance report of the County Surveyor and the schedule of assessments made by the Drainage Board have been filed and are available for public inspection in the office of the County Surveyor.

The Surveyor has estimated that the annual cost of periodically maintaining the entire drain is \$118,081.46. The schedule of assessments shows you are the owner of tracts within the drainage shed. The following is your pro rata share for each tract and the proposed annual assessment for those tracts: This assessment is not a charge for services associated with regulating the quality of storm water within your city or town.

Table with 6 columns: Parcel, Current Acres, Current Maint. Assmt., Proposed Acres, Proposed Maint. Assmt., % of Asmnt. Row 1: S29 T18 R3 Stanford Park 1st Lot 9, n/a, n/a, One Lot, \$65.00, 0.06%. Row 2: Note about J.W. Brendle drain.

A public hearing will be held by the Drainage Board in Commissioner's Court at 9:05 A.M. on September 26, 2011 on the Surveyor's maintenance report and the proposed schedule of assessments. The law requires that any objection must be written and filed not less than five (5) days before the above hearing on the ground that benefits assessed are excessive. Written evidence in support of objections may also be filed. The failure of any owner to file an objection constitutes a waiver of his right to thereafter object on such ground to any final action of the Board. On or before the hearing date the Surveyor or any owner of lands named in the schedule of assessments may cause written evidence to be filed in support of or in rebuttal to any objection filed.

HAMILTON COUNTY DRAINAGE BOARD
One Hamilton County Square, Ste. 188
Noblesville, IN 46060

For a copy of the Surveyor's Report to the Drainage Board and a copy of the map, if applicable, please go to www.hamiltoncounty.in.gov/drainageboardnotices.

RETURNED

OFFICE OF

HAMILTON COUNTY DRAINAGE BOARD

Notice of Hearing to Establish Annual Assessments for the Periodic Maintenance of the Long Branch Drain, J.W. Brendle Drain Arm.

Martin, Ryan D
3510 Golden Gate Dr N
Carmel, IN 46074

Under the Indiana Drainage Code, all land which drains directly, or indirectly, may be assessed for either maintenance cost or reconstruction cost within the drain. In making the calculation for each parcel, the Drainage Board must calculate the percentage of the cost attributable to each parcel of land benefitted. From time to time the assessments may be increased or changed. The chart below contains your proposed assessment and your percentage of the total annual maintenance contribution to the costs attributable to providing drainage to your land.

The Drainage Board has received a maintenance report and schedule of assessments which affects your land. You are hereby notified that the maintenance report of the County Surveyor and the schedule of assessments made by the Drainage Board have been filed and are available for public inspection in the office of the County Surveyor.

The Surveyor has estimated that the annual cost of periodically maintaining the entire drain is \$118,081.46. The schedule of assessments shows you are the owner of tracts within the drainage shed. The following is your pro rata share for each tract and the proposed annual assessment for those tracts: This assessment is not a charge for services associated with regulating the quality of storm water within your city or town.

Table with 5 columns: Parcel, Current Acres, Current Maint. Assmt., Proposed Acres, Proposed Maint. Assmt., % of Assmt. Row 1: S29 T18 R3 Townhomes@Stanford Park 3rd Lot 245, n/a, n/a, One Lot, \$65.00, 0.06%

A public hearing will be held by the Drainage Board in Commissioner's Court at 9:05 A.M. on September 26, 2011 on the Surveyor's maintenance report and the proposed schedule of assessments. The law requires that any objection must be written and filed not less than five (5) days before the above hearing on the ground that benefits assessed are excessive. Written evidence in support of objections may also be filed. The failure of any owner to file an objection constitutes a waiver of his right to thereafter object on such ground to any final action of the Board. On or before the hearing date the Surveyor or any owner of lands named in the schedule of assessments may cause written evidence to be filed in support of or in rebuttal to any objection filed.

HAMILTON COUNTY DRAINAGE BOARD
One Hamilton County Square, Ste. 188
Noblesville, IN 46060

For a copy of the Surveyor's Report to the Drainage Board and a copy of the map, if applicable, please go to www.hamiltoncounty.in.gov/drainageboardnotices.

RETURNED

OFFICE OF

HAMILTON COUNTY DRAINAGE BOARD

Notice of Hearing to Establish Annual Assessments for the Periodic Maintenance of the Long Branch Drain, J.W. Brendle Drain Arm.

Arbona, Jose A & Carmen
4088 Weston Pointe Dr
Zionsville, IN 46077

Under the Indiana Drainage Code, all land which drains directly, or indirectly, may be assessed for either maintenance cost or reconstruction cost within the drain. In making the calculation for each parcel, the Drainage Board must calculate the percentage of the cost attributable to each parcel of land benefitted. From time to time the assessments may be increased or changed. The chart below contains your proposed assessment and your percentage of the total annual maintenance contribution to the costs attributable to providing drainage to your land.

The Drainage Board has received a maintenance report and schedule of assessments which affects your land. You are hereby notified that the maintenance report of the County Surveyor and the schedule of assessments made by the Drainage Board have been filed and are available for public inspection in the office of the County Surveyor.

The Surveyor has estimated that the annual cost of periodically maintaining the entire drain is \$118,081.46. The schedule of assessments shows you are the owner of tracts within the drainage shed. The following is your pro rata share for each tract and the proposed annual assessment for those tracts: This assessment is not a charge for services associated with regulating the quality of storm water within your city or town.

Table with 6 columns: Parcel ID, Current Acres, Current Maint., Proposed Acres, Proposed Assmt., % of Assmt. Row 1: S6 T17 R3 Townes@Weston Pointe Phs 1 Bldg 3 Unit 302, One Lot, \$65.00, One Lot, \$65.00, 0.06%

A public hearing will be held by the Drainage Board in Commissioner's Court at 9:05 A.M. on September 26, 2011 on the Surveyor's maintenance report and the proposed schedule of assessments. The law requires that any objection must be written and filed not less than five (5) days before the above hearing on the ground that benefits assessed are excessive. Written evidence in support of objections may also be filed. The failure of any owner to file an objection constitutes a waiver of his right to thereafter object on such ground to any final action of the Board. On or before the hearing date the Surveyor or any owner of lands named in the schedule of assessments may cause written evidence to be filed in support of or in rebuttal to any objection filed.

HAMILTON COUNTY DRAINAGE BOARD
One Hamilton County Square, Ste. 188
Noblesville, IN 46060

For a copy of the Surveyor's Report to the Drainage Board and a copy of the map, if applicable, please go to www.hamiltoncounty.in.gov/drainageboardnotices.

RETURNED

OFFICE OF

HAMILTON COUNTY DRAINAGE BOARD

Notice of Hearing to Establish Annual Assessments for the Periodic Maintenance of the Long Branch Drain, J.W. Brendle Drain Arm.

Bolin, Michael L IV
13376 Golden Gate Dr E
Carmel, IN 46074

Under the Indiana Drainage Code, all land which drains directly, or indirectly, may be assessed for either maintenance cost or reconstruction cost within the drain. In making the calculation for each parcel, the Drainage Board must calculate the percentage of the cost attributable to each parcel of land benefitted. From time to time the assessments may be increased or changed. The chart below contains your proposed assessment and your percentage of the total annual maintenance contribution to the costs attributable to providing drainage to your land.

The Drainage Board has received a maintenance report and schedule of assessments which affects your land. You are hereby notified that the maintenance report of the County Surveyor and the schedule of assessments made by the Drainage Board have been filed and are available for public inspection in the office of the County Surveyor.

The Surveyor has estimated that the annual cost of periodically maintaining the entire drain is \$118,081.46. The schedule of assessments shows you are the owner of tracts within the drainage shed. The following is your pro rata share for each tract and the proposed annual assessment for those tracts: This assessment is not a charge for services associated with regulating the quality of storm water within your city or town.

Table with 6 columns: Parcel, Current Acres, Current Maint. Assmt., Proposed Acres, Proposed Maint. Assmt., % of Assmt. Row 1: S29 T18 R3 Townhomes@Stanford Park 3rd Lot 216, n/a, n/a, One Lot, \$65.00, 0.06%

A public hearing will be held by the Drainage Board in Commissioner's Court at 9:05 A.M. on September 26, 2011 on the Surveyor's maintenance report and the proposed schedule of assessments. The law requires that any objection must be written and filed not less than five (5) days before the above hearing on the ground that benefits assessed are excessive. Written evidence in support of objections may also be filed. The failure of any owner to file an objection constitutes a waiver of his right to thereafter object on such ground to any final action of the Board. On or before the hearing date the Surveyor or any owner of lands named in the schedule of assessments may cause written evidence to be filed in support of or in rebuttal to any objection filed.

HAMILTON COUNTY DRAINAGE BOARD
One Hamilton County Square, Ste. 188
Noblesville, IN 46060

For a copy of the Surveyor's Report to the Drainage Board and a copy of the map, if applicable, please go to www.hamiltoncounty.in.gov/drainageboardnotices.

OFFICE OF

HAMILTON COUNTY DRAINAGE BOARD

Notice of Hearing to Establish Annual Assessments for the Periodic Maintenance of the
Long Branch Drain, J.W. Brendle Drain Arm.

Gransee, John R & Alexis
 3851 Meadow Side Ct
 Zionsville, IN 46077

Under the Indiana Drainage Code, all land which drains directly, or indirectly, may be assessed for either maintenance cost or reconstruction cost within the drain. In making the calculation for each parcel, the Drainage Board must calculate the percentage of the cost attributable to each parcel of land benefitted. From time to time the assessments may be increased or changed. The chart below contains your proposed assessment and your percentage of the total annual maintenance contribution to the costs attributable to providing drainage to your land.

The Drainage Board has received a maintenance report and schedule of assessments which affects your land. You are hereby notified that the maintenance report of the County Surveyor and the schedule of assessments made by the Drainage Board have been filed and are available for public inspection in the office of the County Surveyor.

The Surveyor has estimated that the annual cost of periodically maintaining the entire drain is \$118,081.46. The schedule of assessments shows you are the owner of tracts within the drainage shed. The following is your pro rata share for each tract and the proposed annual assessment for those tracts: This assessment is not a charge for services associated with regulating the quality of storm water within your city or town.

Parcel: 17-09-31-00-02-045.000 Rate:Regulated Subd					
	Current	Current	Proposed	Proposed	
	Acres	Maint.	Acres	Maint.	% of
S31 T18 R3 Long Branch Estates 2nd Lot 102	Benefited	Assmt.	Benefited	Assmt.	Asmnt.
	One Lot	\$65.00	One Lot	\$65.00	0.06%
If the J.W. Brendle is combined with the Long Branch Drain, future assessments will be made to Long Branch instead of J.W. Brendle.					

A public hearing will be held by the Drainage Board in Commissioner's Court at **9:05 A.M. on September 26, 2011** on the Surveyor's maintenance report and the proposed schedule of assessments. The law requires that any objection must be written and filed not less than five (5) days before the above hearing on the ground that benefits assessed are excessive. Written evidence in support of objections may also be filed. The failure of any owner to file an objection constitutes a waiver of his right to thereafter object on such ground to any final action of the Board. On or before the hearing date the Surveyor or any owner of lands named in the schedule of assessments may cause written evidence to be filed in support of or in rebuttal to any objection filed.

HAMILTON COUNTY DRAINAGE BOARD
 One Hamilton County Square, Ste. 188
 Noblesville, IN 46060

For a copy of the Surveyor's Report to the Drainage Board and a copy of the map, if applicable, please go to www.hamiltoncounty.in.gov/drainageboardnotices.

RETURNED

OFFICE OF

HAMILTON COUNTY DRAINAGE BOARD

Notice of Hearing to Establish Annual Assessments for the Periodic Maintenance of the Long Branch Drain, J.W. Brendle Drain Arm.

Zhu, Xinyu
2581 Diamond Lake Dr
Carmel, IN 46074

Under the Indiana Drainage Code, all land which drains directly, or indirectly, may be assessed for either maintenance cost or reconstruction cost within the drain. In making the calculation for each parcel, the Drainage Board must calculate the percentage of the cost attributable to each parcel of land benefitted. From time to time the assessments may be increased or changed. The chart below contains your proposed assessment and your percentage of the total annual maintenance contribution to the costs attributable to providing drainage to your land.

The Drainage Board has received a maintenance report and schedule of assessments which affects your land. You are hereby notified that the maintenance report of the County Surveyor and the schedule of assessments made by the Drainage Board have been filed and are available for public inspection in the office of the County Surveyor.

The Surveyor has estimated that the annual cost of periodically maintaining the entire drain is \$118,081.46. The schedule of assessments shows you are the owner of tracts within the drainage shed. The following is your pro rata share for each tract and the proposed annual assessment for those tracts: This assessment is not a charge for services associated with regulating the quality of storm water within your city or town.

Table with 6 columns: Parcel, Current Acres, Current Maint., Proposed Acres, Proposed Assmt., % of Assmt. Row 1: S29 T18 R3 Lakes@Towne Road 2nd Lot 43, n/a, n/a, One Lot, \$65.00, 0.06%. Row 2: If the J.W. Brendle is combined with the Long Branch Drain, future assessments will be made to Long Branch instead of J.W. Brendle.

A public hearing will be held by the Drainage Board in Commissioner's Court at 9:05 A.M. on September 26, 2011 on the Surveyor's maintenance report and the proposed schedule of assessments. The law requires that any objection must be written and filed not less than five (5) days before the above hearing on the ground that benefits assessed are excessive. Written evidence in support of objections may also be filed. The failure of any owner to file an objection constitutes a waiver of his right to thereafter object on such ground to any final action of the Board. On or before the hearing date the Surveyor or any owner of lands named in the schedule of assessments may cause written evidence to be filed in support of or in rebuttal to any objection filed.

HAMILTON COUNTY DRAINAGE BOARD
One Hamilton County Square, Ste. 188
Noblesville, IN 46060

For a copy of the Surveyor's Report to the Drainage Board and a copy of the map, if applicable, please go to www.hamiltoncounty.in.gov/drainageboardnotices.

BEFORE THE HAMILTON COUNTY DRAINAGE BOARD
IN THE MATTER OF

Long Branch Drain, J. W. Brendel Arm

NOTICE

To Whom It May Concern and: Spurgeon, Ted L. & Tanya L.

Fang, Stephanie L. Powell

Miller, Edward W.

Williamson, Toni S.

Gunawan, Boy Stephanus

Martin, Ryan D.

Arbona, Jose A. & Carmen

Bolin, Michael L. IV

Gransee, John R. & Alexis

Notice is hereby given of the hearing of the Hamilton County Drainage Board on the **Long Branch Drain, J. W. Brendel Arm** on **September 26, 2011** at **9:05 A.M.** in Commissioners Court, Hamilton County Judicial Center, One Hamilton County Square, Noblesville, Indiana, and which construction and maintenance reports of the Surveyor and the Schedule of Assessments made by the Drainage Board have been filed and are available for public inspection in the office of the Hamilton County Surveyor.

Hamilton County Drainage Board

Attest: Lynette Mosbaugh

ONE TIME ONLY

BEFORE THE HAMILTON COUNTY DRAINAGE BOARD
IN THE MATTER OF THE

Long Branch Drain, J. W. Brendel Arm

NOTICE

Notice is hereby given pursuant to Section 405 of the 1965 Indiana Drainage Code that this Board, prior to final adjournment on **September 26, 2011** has issued an order adopting the Schedule of Assessments, filed the same and made public announcement thereof at the hearing and ordered publication. If judicial review of the findings and order of the Board is not requested pursuant to Article Eight of this code within twenty (20) days from the date of this publication, the order shall be conclusive.

Hamilton County Drainage Board

Attest: Lynette Mosbaugh

ONE TIME ONLY